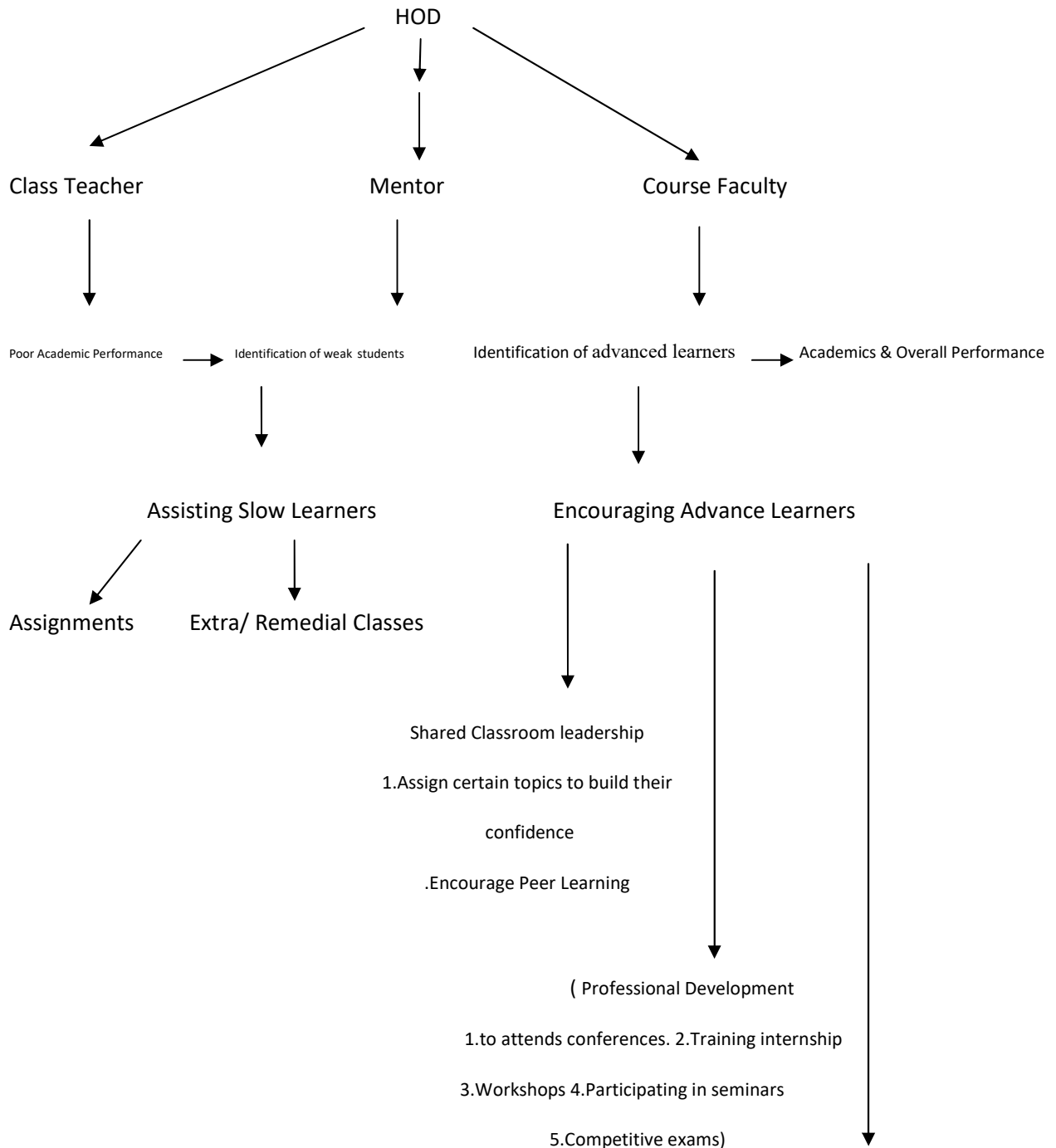


The Mechanism of Rai Saheb Bhanwar Singh College to assess the learning levels of the students and organizes special Programmes for advanced learners and slow learners.




Inspire Student Creativity By
 1. Inter collegiate fest
 2. State & National events
 3. Compete in State & National Events

Following activities are done by teachers for students:

Slow learners:

1. Individual counselling.
2. Remedial Coaching
3. Extra notes.
4. Group discussion session.
5. Internal examination process.
6. Encouragement in NSS, Sports, and academic activities.
7. Extra library books.

Advance learners:

1. Advance notes
2. Seminar sessions
3. Participative learning sessions i.e., Self-Discipline Day & Teachers Day
4. Experimental learning sessions i.e., Industrial Tour
5. Projects
6. Assessments
7. Group discussion sessions
8. Internet facility.
9. Advance questions papers. In order to enhance their confidence level, the department conducts different activities such as NSS, Cultural, and Sports to develop their overall personality

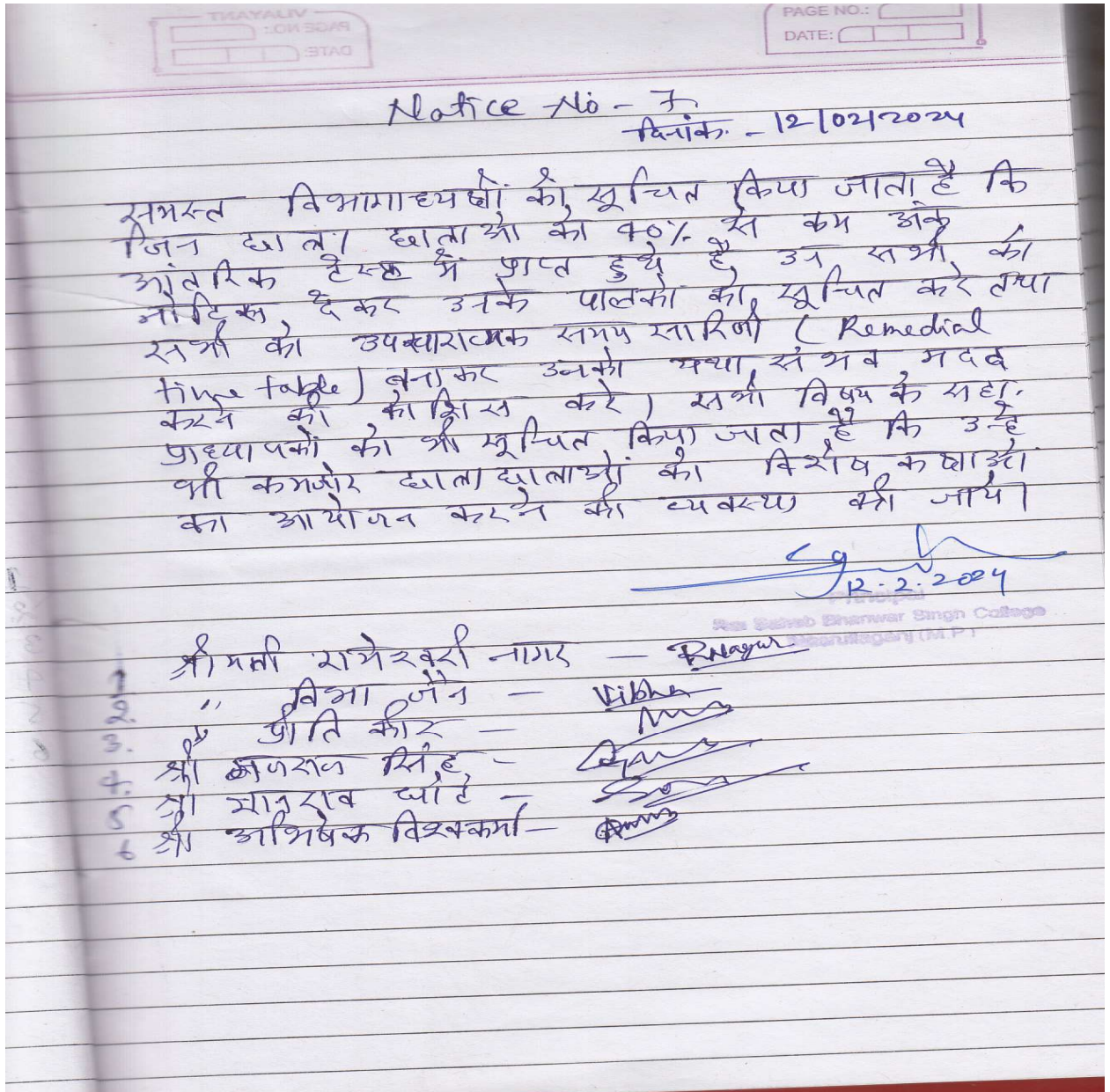


Rai Saheb Bhanwar Singh College Nasrullaganj Sehore

Notice

It is inform to all students who secure below 40% in the internal examination, college arrange the Remedial classes. Please see their department notice board for Remedial time table.

उन सभी छात्रों को सूचित किया जाता है जो आंतरिक परीक्षा में 40% से कम अंक प्राप्त करते हैं, कॉलेज उपचारात्मक कक्षाओं की व्यवस्था करता है। कृपया उपचारात्मक समय सारणी के लिए उनके विभाग का नोटिस बोर्ड देखें



Rajeshwari